

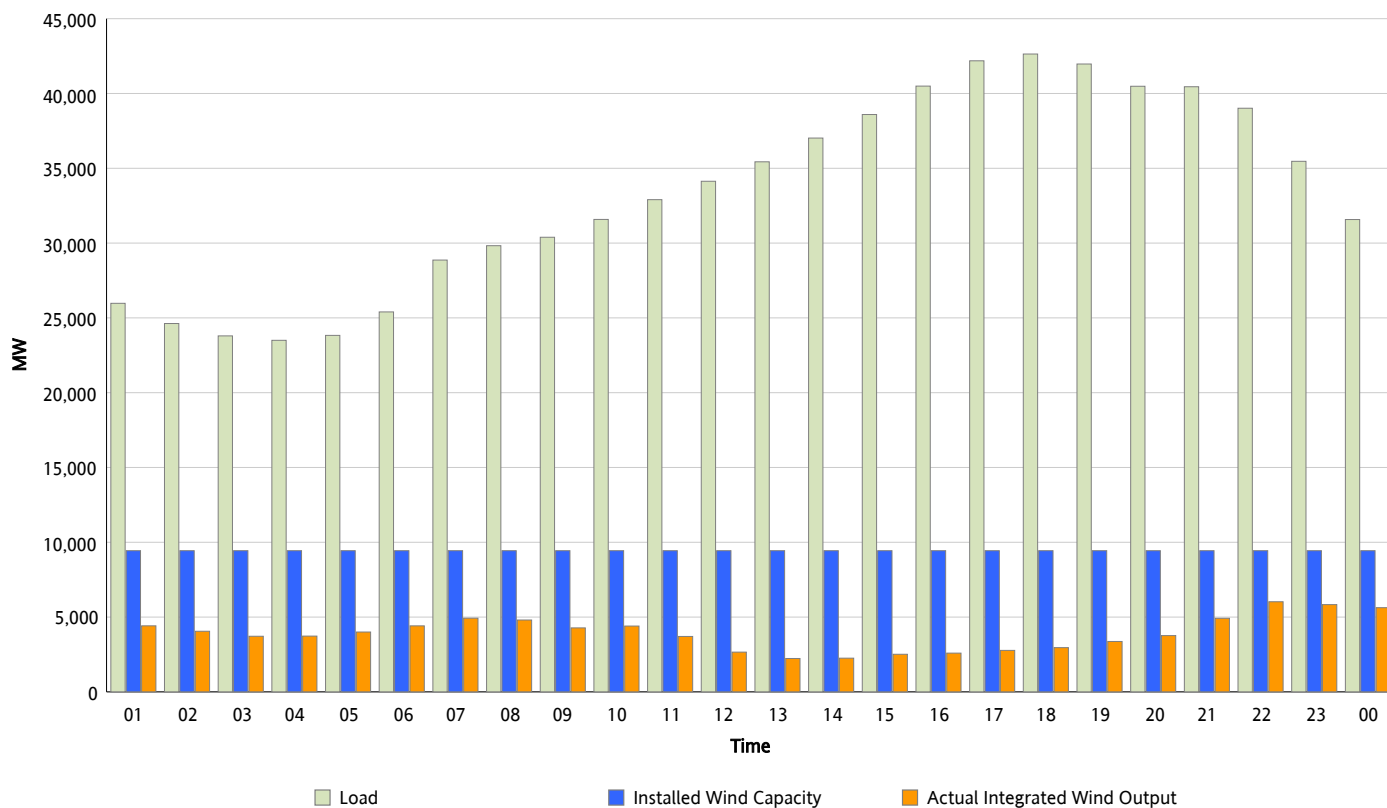


## ERCOT Grid Operations

### Wind Integration Report : 04/24/2012

Peak Load	42,638 MW
Load Peak Hour (HE)	18
Wind Over Peak	2,958 MW
Wind Record 04/13/12	7,925 MW
Max Wind Value*	6,189 MW
Wind Peak Time	21:38
Wind Integration %	16.09 %

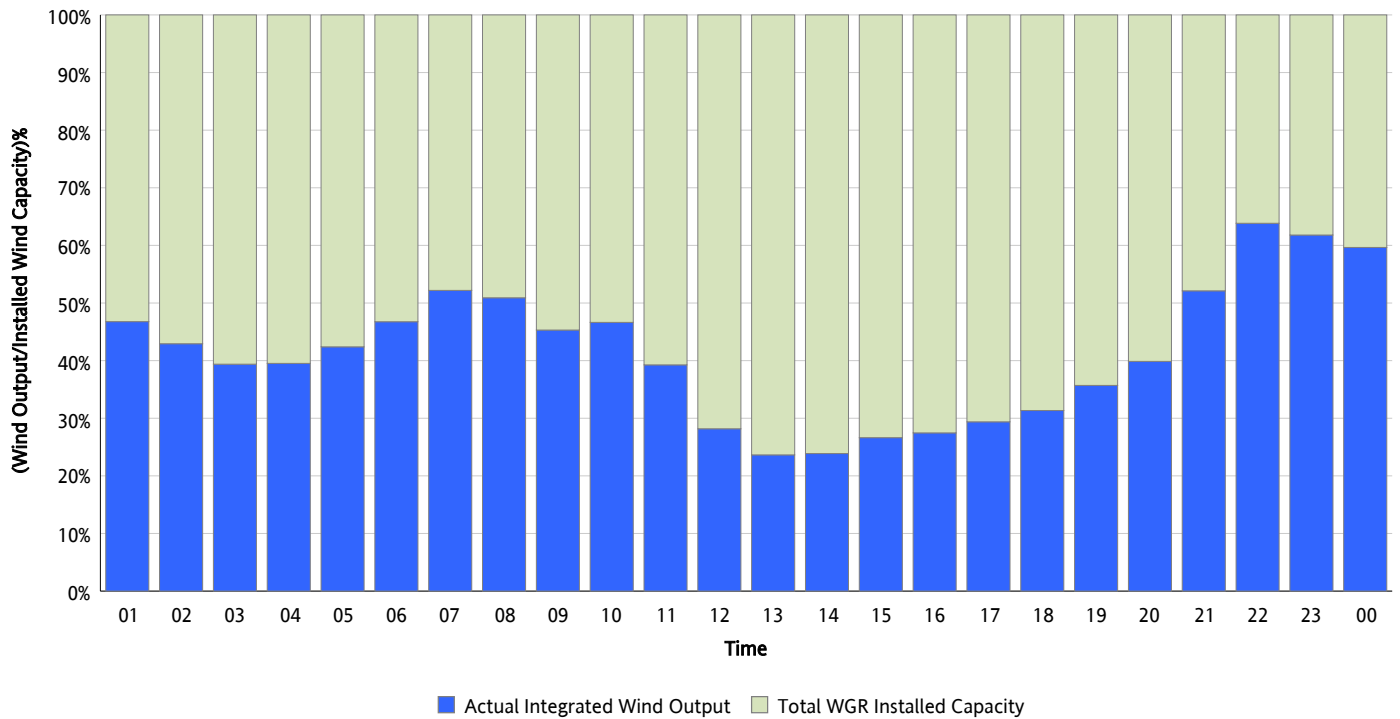
**Hourly Average Actual Load vs. Actual Wind Output**  
**04/24/2012**



\* Wind Record and Wind Max represent instantaneous values and the rest of the values are integrated over the hour

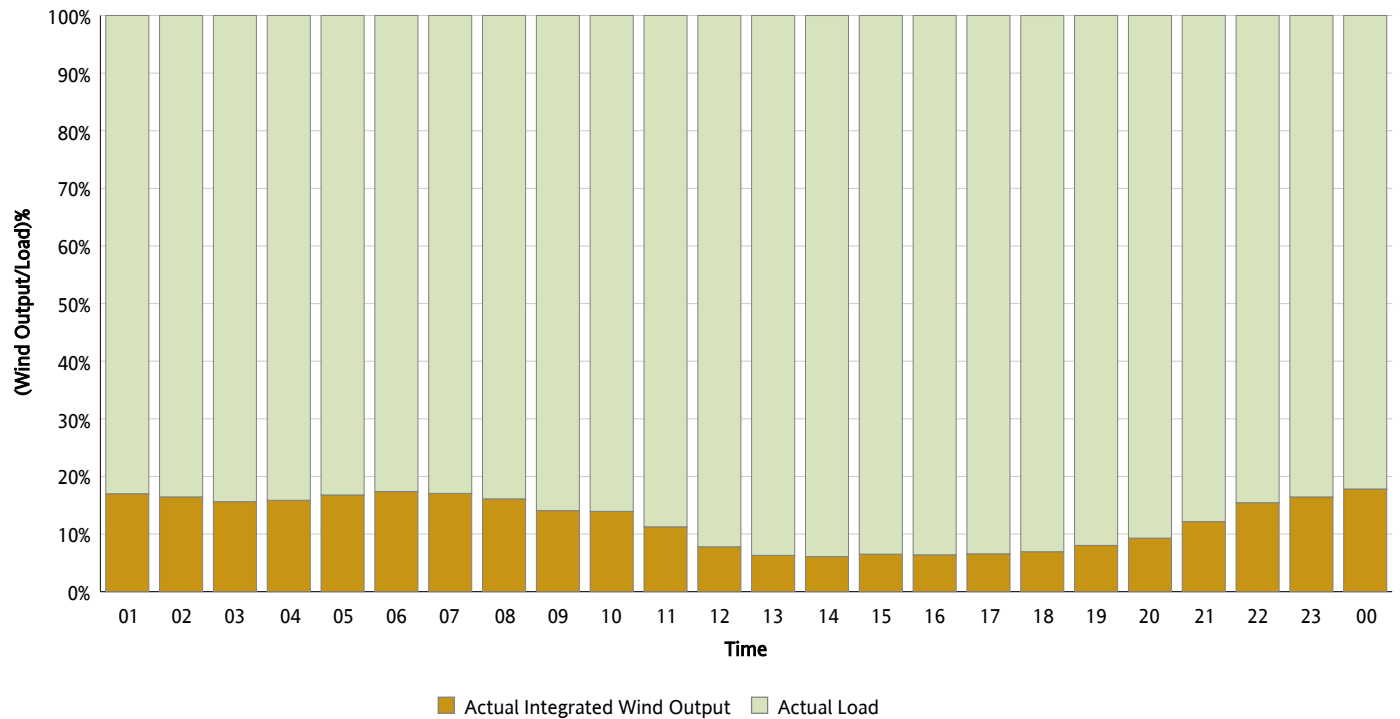
## Actual Wind Output as a Percentage of the Total Installed Wind Capacity

04/24/2012



## Actual Wind Output as a Percentage of the ERCOT Load

04/24/2012



## ERCOT Load vs. Actual Wind Output

04/17/2012 - 04/24/2012

